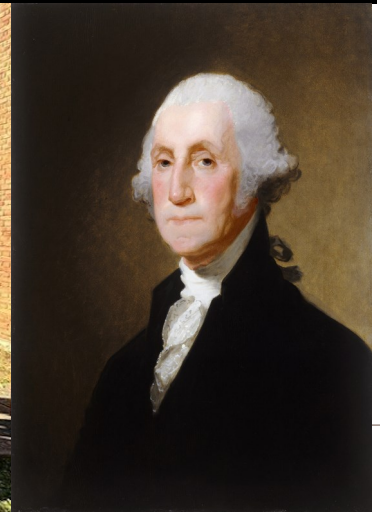


Quarterly Newsletter of the Woodford County Historical Society, Inc.



Officers:

President: Winfrey Adkins
 Vice-President: William Phelps
 Treasurer: Moe Bakke
 Secretary: Shirley Rouse

Directors:

Donita Lodmell
 Linda Finnell
 Jeannette Sellers
 Pat Sutherland
 Martin Traugott

Volunteers:

Wayne Basconi
 Clara Bleier
 Sally Graul
 Amber Harvey
 Harold Lee
 Brenda Jackson
 Judy Phillips
 Ann Mendenhall
 Brady Miller
 Avery Schanbacher

Inside This Issue:

President's Message	1 - 2
Dedication Poster	2
Lafayette Dedication & Pictures	3 - 5
Annual Meeting with Show & Tell	6 - 7
New Board Members	8 - 9
New Acquisitions	10 - 11
Membership & Contact	11
Cover Page	12

A Letter from the President, January 2025:

A lot has happened since our last Newsletter. The Woodford County Historical Society held it's annual election, and three new directors and a new Treasurer were elected. We would like to welcome Jeanette Sellers, Pat Sutherland, and Linda Finnell as our incoming Directors, and Moe Bakke as our Treasurer. All of these individuals bring special skills and talent to our organization, and we are fortunate to have them in leadership positions, complimenting the existing Officers and Directors. I would like to extend a big thank you to the outgoing Directors and Treasurer. Your service was greatly appreciated. Please stay active.

In November, we discovered that our downstairs furnace was malfunctioning, and we had it replaced with a new unit. Shortly after this occurred, after monitoring the conditions in our Museum, Director Martin Traugott noticed that the new furnace was also malfunctioning, and the Contractor had to replace the defective new furnace. This has now been done and we have safe heat again.

Activity continues with the Crittenden Cabin, with the Board voting unanimously to cover the cabin, temporarily, with a heavy duty tarp, donated by Treasurer Bakke. Thanks to Mr. Bakke for saving the Society a large sum of money through his generous donation.

Annual dues are coming in, and, if you have not paid yours, please send them in by January 31, 2025. We always have a need for volunteers to help with inventorying, arranging exhibits in our collections and a variety of things to be done. Contact the museum if you can help us with your time.

We are always in need of programs and speakers for the upcoming year. Our January 23 program will be presented by Kate Hutcherson Robie at the Society. She will be speaking on "Raising Alpacas and Llamas in Central Kentucky". We currently plan to co-sponsor the March 27 and April 24 programs with the Hometown Community Interpretive Park at the Woodford County Library. If you know anyone who would like to present a program for the Society please contact the museum.

Please keep the Society in mind when speaking with your friends and associates. Encourage them to visit, to browse through the museum and to attend our functions. Happy New Year to all and I hope to see you at our upcoming programs.

Your President,
Winfrey Adkins



General Lafayette Marker Dedication Program

Saturday, October 26, 2024

A new historic marker to commemorate General Lafayette's stop in Versailles during his farewell tour of the United States on May 15, 1825 will be dedicated on October 26. With this dedication, Versailles will formally join the national Lafayette Trail and its Kentucky representatives. A historical lecture will be presented following the dedication in the Market and Entertainment Center across the parking lot from the Historical Society.

Saturday, October 26, 2:00 p.m.
Woodford County Historical Society
121 Rose Hill, Versailles

This program is free and open to the public.
Refreshments will be served following the dedication.
Please join us for this historic occasion.



Marquis de Lafayette Marker Dedication ~ October 26, 2024

On Saturday, October 26, 2024, at 2 pm ET, The Lafayette Trail, Inc., the Kentucky Society of the Daughters of the American Revolution, the General Marquis Calmes Chapter of the Daughters of the American Revolution, and the Woodford County Kentucky Historical Society with the help of the of the Lafayette Chapter of the Kentucky Sons of The American Revolution, unveiled a new historic marker to commemorate General Marquis de Lafayette's stop in Versailles during his Farewell Tour of the United States on May 15, 1825. Lafayette Trail, Inc. donated the marker with funding from the William G. Pomeroy Foundation. It is part of a national series honoring Lafayette's extensive 1824-1825 journey across the American Union. The program currently counts over 158 recipients across 23 states and Washington, DC.

General Lafayette was a French aristocrat who served as a major general in the Continental Army during the Revolutionary War. Lafayette stood out as a French nobleman because he respected the manners of the New World. Lafayette understood, practiced, and preached principles of democratic equality underpinning American republicanism. In 1824, he was invited by Congress to return to the United States one final time as the nation prepared to mark the 50th anniversary of the beginning of the American Revolution. His "Farewell Tour" lasted 13 months.

Lafayette visited Kentucky in May of 1825, making stops in Smithland, Louisville, Shelbyville, Frankfort, Versailles, Lexington, Georgetown, and Maysville. Lafayette stopped in Versailles on Sunday, May 15, 1825, where he attended religious service on his way from Frankfort to Lexington.

(Above information was part of a Press Release sent on October 8, 2024)



Winfrey Adkins, President of the Woodford County Historical Society opens the ceremony.



Presentation of Colors & Pledge of Allegiance— Kentucky Sons of the American Revolution-Lafayette Chapter, Patrick Wesolosky, President; Dale Henley, State Coordinator.



James Kay, Judge/Executive of Woodford County since 2019, welcomes guests to the dedication and discusses the importance of community patriotism.



Left to Right; Linda Conrad, State Regent for the Daughter's of the American Revolution, Julien Icher, founder and President of The Lafayette Trail, Inc., and Kathy Toy, KSDAR State Chaplin.



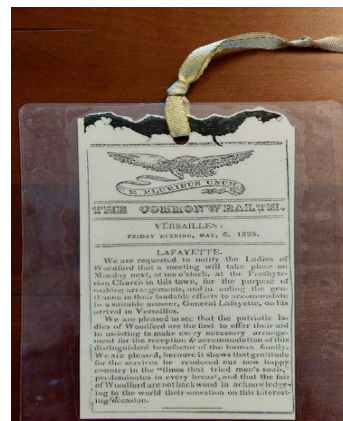
Lisa Johnson discussed the past history of Woodford County. She is currently the acting Mayor for the city of Versailles.



Richard Short, the Grand Master of the Grand Lodge of the State of Kentucky. History shows that Lafayette was drawn to Masonry because of members being equal regardless of their status in society.



Display featuring the silver Urn from Versailles, France; pastel oil paintings of Versailles and other Versailles, France maps, information and memorabilia.



An article from the May 6, 1825, "The Commonwealth" asking the ladies of Versailles to meet.

Lafayette memorabilia and information on display for viewing.



Masonic Apron worn by Lafayette. Brought to the dedication for display by LaGrange Kentucky Fortitude Lodge No. 47.



Lafayette memorabilia and information on display for viewing.



(L to R) Moe Bakke, Margaret Shropshire and Kathy Hall enjoying the activity.



“THE UNVEILING OF THE MARKER”



(L to R) Bill Phelps, Linda Conrad and Julien Icher.



A special lecture was given by Julien Icher following the dedication ceremony at the new pavilion located in the Versailles Market and Entertainment Center across the parking lot from the Historical Society. The focus of his lecture was stressing the Revolutionary War and the historical imagery of national unity that Lafayette invoked as a “paragon of liberty” during his tour.



Refreshments were provided by The General Marquis Calmes Chapter, NSDAR with some additions by the Historical Society, Moe Bakke.

(L to R) Regent Laura Shropshire, Jeannette Sellers and Nancy Engle.

Special Thanks

- Woodford County Judge Executive James Kay
- Woodford County Fiscal Court
- The City of Versailles; Nola Boggs Seber
- Woodford County Road Department
- Versailles Fire Department
- Kentucky Sons of the American Revolution-Lafayette Chapter
- Kentucky Society of the Daughters of the American Revolution-The General Marquis Calmes Chapter
- The Lafayette Trail, Inc. with support from the William G. Pomeroy Foundation
- American Legion Post 67
- The Woodford County Historical Society

Annual Meeting ~ Show and Tell

Each year the Woodford County Historical Society holds an Annual Meeting when new officers are elected to the Board of Directors. Following the meeting is a much looked forward to evening of Show and Tell. Members bring items, historic in nature, to share with the gathered group. Below are a few of those items from the November 8, 2024 gathering.



Plates were often given to customers as a way of advertising. An A. A. Greenbaum plate shown on the left and an Old Barbee Distillery plate in the center with a photo of the back of it on the right. Plates shared by Pat Sutherland.



Moe Bakke holding a vintage teddy bear shared by Lillie Cox.



An ice pick from Blackburn Bros., a grocery store on Main Street was shared by Bill Phelps.



Top left a porcelain jewelry dish from Rodeo Drive given to the Grandmother of Judy Phillips as a 16th birthday present. Bottom right a European cut Aquamarine 5 carat ring given to the great-grand aunt of Judy Phillips.



Stamps from the Happy Chandler collection shared by Martin Traugott; made into a bookmark by Brenda Jackson.



James Calvin and Teresa Currens visited the meeting and shared memories of Versailles in the past.

(L to R) Martin Traugott, James Calvin and Teresa Currens.

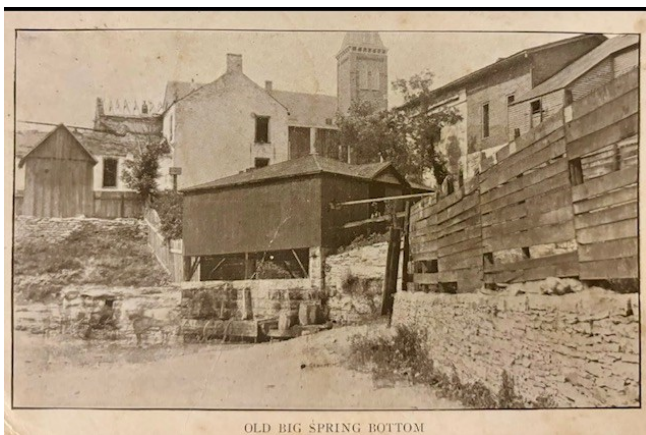


A 1920 Kentucky State Fair Horse Trophy.



MAIN STREET, LOOKING SOUTH

Postcards of Versailles, showing Amsden and Old Big Spring Bottom shared by Jeannette Sellers.



OLD BIG SPRING BOTTOM



Brenda Jackson shares her vintage concert tickets.



Above is an instrument used by Bill Graul used in navigation training for B29's during the Korean Conflict shared by Sally Graul. Below is Bill's slide rule.



Installation of New Officers and Directors for 2025



(L to R) Moe Bakke, Treasurer, and Directors Linda Finnell, Jeannette Sellers and Pat Sutherland

Maurice (Moe) Bakke is married to Anne and their careers are in agriculture. Anne was a professor for 30 years and Moe operated a national/international animal nutrition consulting business. They moved to Woodford County in 2004. While they were attending the Kentucky State Fair, they found and purchased land in Nonesuch. Their property was once owned by Gabriel Munday, whose family cemetery marker shows 1816. They have both been actively involved in volunteer activities in the county, specifically UK Extension activities and the Woodford County Library. They are still in the business of farming. Moe looks forward to his position as Treasurer in order to help support the activities of the Historical Society.

Linda Finnell is married to Gary, a lifelong resident of Woodford County. Linda is retired from the Circuit Clerk Office. She has served as treasurer of the Society as well as serving as chair of the Home Tours Committee and is an active volunteer. Linda is also on the board of the Jack Jouett House and the Woodford County Cemetery Committee. As a volunteer she has been organizing picture files. Linda is interested in serving as a Director to help promote recording the rich history of the county.

Jeannette Sellers is married to Billy, both being native Woodford Countians. Jeannette retired from the United Bank currently WesBanco Bank. She is currently on the Board of Woodford County Festival of Trees which benefits "Shop with a Cop" and "Young Life", Versailles Merchant Alliance since 2018, the "Amigos" program at the Versailles Presbyterian Church which mentors Simmons Elementary students. Jeannette desires to serve on the Society board because of her interest and desire to promote our county history and activities.

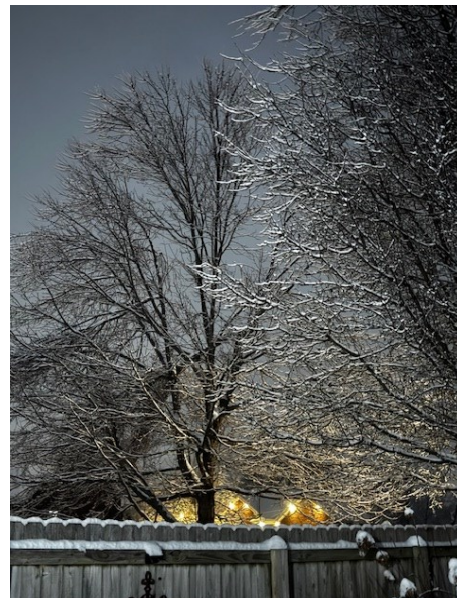
Pat D. Sutherland is the widow of Maury Lackey. Pat is a native of Woodford County with multiple family connections. Pat desires to be on the board of Woodford County Historical Society because she has a deep appreciation for our past and desires to be part of the planning for the our future. Pat believes that it is important to educate present Woodford Countians as well as future Woodford Countians regarding out rich history. Pat retired from LRC, owned Hillside Antiques and Gifts for 15plus years, and worked at United Bank. She is a member of the Patchwork Homemakers. Pat is looking forward to working with like minded Historical Society members.

Snow
by
Madison Julius Cawein

The moon, like a round device
On a shadowy shield of war,
Hangs white in a heaven of ice
With a solitary star.

The wind is sunk to a sigh,
And the waters are stern with frost;
And gray, in the eastern sky,
The last snow-cloud is lost.

White fields, that are winter-starved,
Black woods, that are winter-fraught,
Cold, harsh as a face death-carved
With the iron of some black thought.



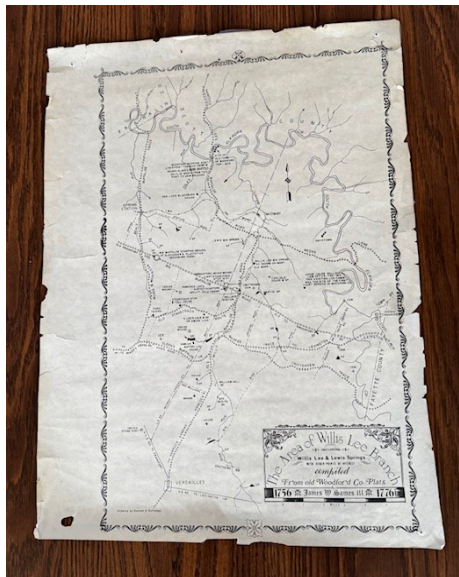
This poem is in the public domain.



“The Keats of Kentucky”

Madison Julius Cawein (1865 - 1914) was a poet from Louisville, Kentucky, who loved to write about nature. Sometimes referred to as "the Keats of Kentucky," Madison published more than thirty books of his own work and translated numerous others written by German poets. While nature was his favorite theme--his wonderfully detailed poems about his native state's flora and fauna have been called a "veritable nature guide to the Kentucky woodlands"--Madison also wrote about a broad range of other subjects, ranging from vampires to fairies. Critically popular, internationally acclaimed, and frequently published in contemporary magazines of his day, Madison was rendered almost destitute by the stock market crash in 1912 and was forced to sell his home and much of his library collection to survive.





“The Area of Willis Lee Branch Map”
Willis Lee and Lewis Springs compiled from Old Woodford County Plats 1756-1776. Donated by Martin Traugott.

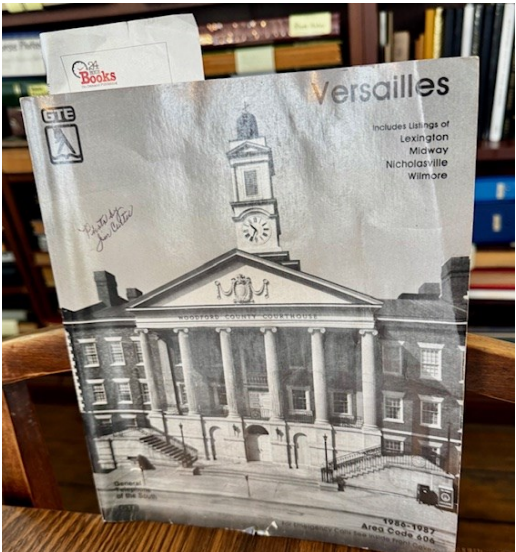


A Helen Bond Carruthers lined, collared cardigan donated by Elizabeth S. Phillips. Navy blue with red buttons and red triangle appliques on the front, back and sleeves.

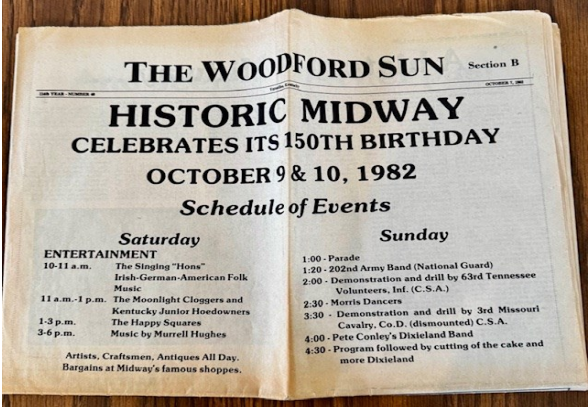
Lovely Oak quilt rack given by Sharon Bloom to help display our many quilts.



1986-1987 Versailles Phonebook. The photo of the Courthouse was taken by Jim Curtis and the donation was made by his wife Toni.



Woodford Sun, October 7, 1982, featuring “Historic Midway, 150th Birthday”.
Donated by Toni Curtis





Continued

Box of Herald Leader Newspapers from 1963-93, September 1939 Southern Life, France Illustration 1950 magazine, and file labeled "Wooldridge Property".

Donated by Winfrey Adkins



Golf Clubs, "driver" and "woody", owned and used by Happy Chandler and inscribed "Gov. A. B. Chandler, (Citation brand clubs).

Given by Jennifer and Ben Chandler



MEMBERSHIP FORM

- Student (age 18 or under) \$5
- Adult \$25
- Family \$40
- Friend \$65
- Supporter \$100
- Benefactor \$500
- A very generous donation of

\$ _____

- New Membership
- Renewal Membership

Please make checks payable to Woodford County Historical Society. Alternatively, you may pay using PayPal sending it to the email for the Historical Society printed below. We are a 501 (c) 3 non-profit, and your gift may be tax deductible. (Please consult your tax preparer for more information.) We thank you in advance for your kind gift. Please check here if you are using PayPal.

Contact Info:
 Woodford County Historical Society
 121 Rose Hill Avenue,
 Versailles, KY 40383
 859- 873-6786

woodfordkyhs@gmail.com
www.woodfordcountykyhistoricalsociety.com

Name: _____
 Address: _____
 City: _____
 State: _____ Zip: _____
 Daytime Telephone: _____



Save the Crittenden Cabin for Woodford County!

Woodford County Historical Society
121 Rose Hill Avenue
Versailles, KY 40383

859-873-6786
woodfordkyhs@gmail.com

